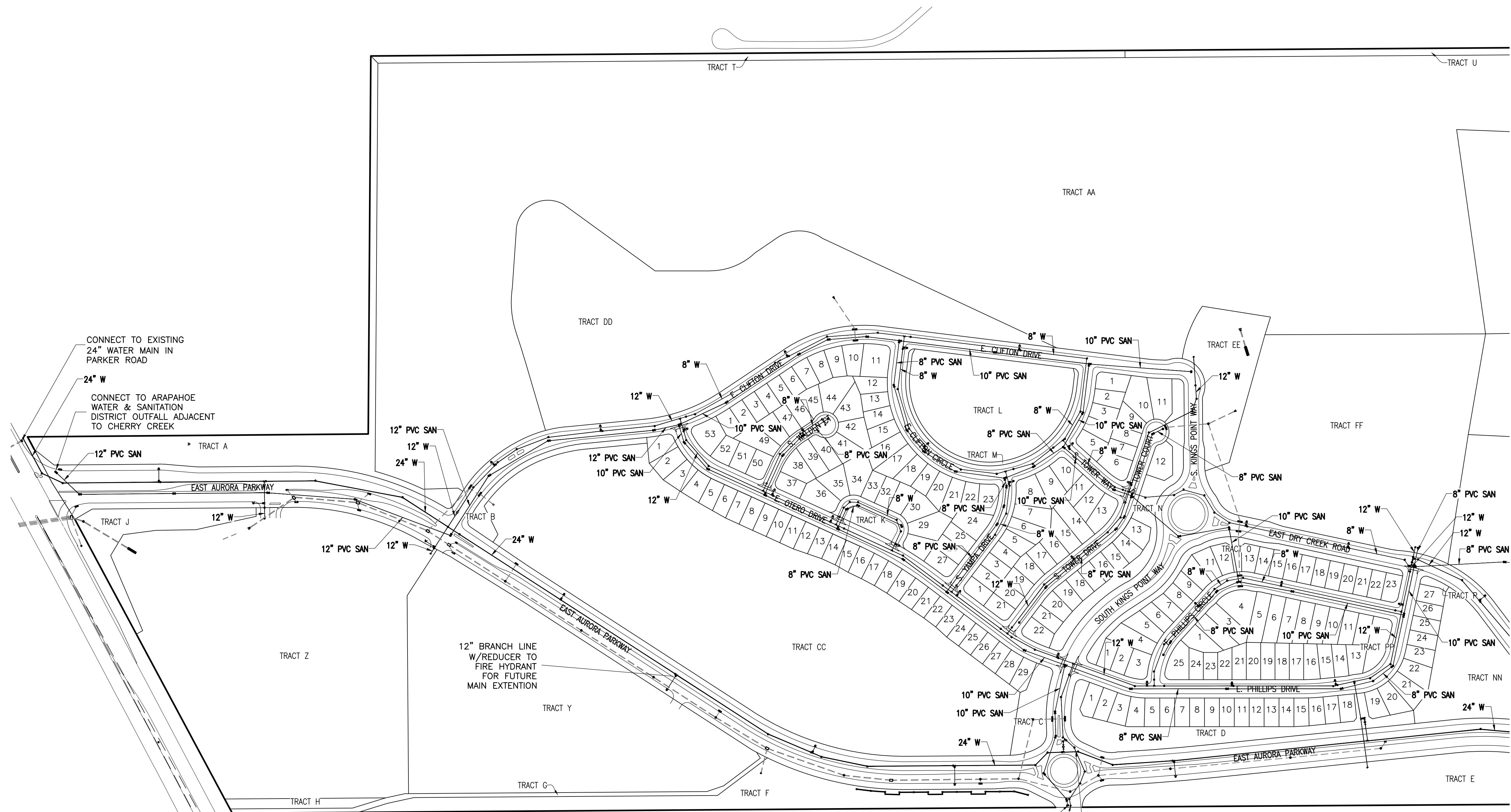
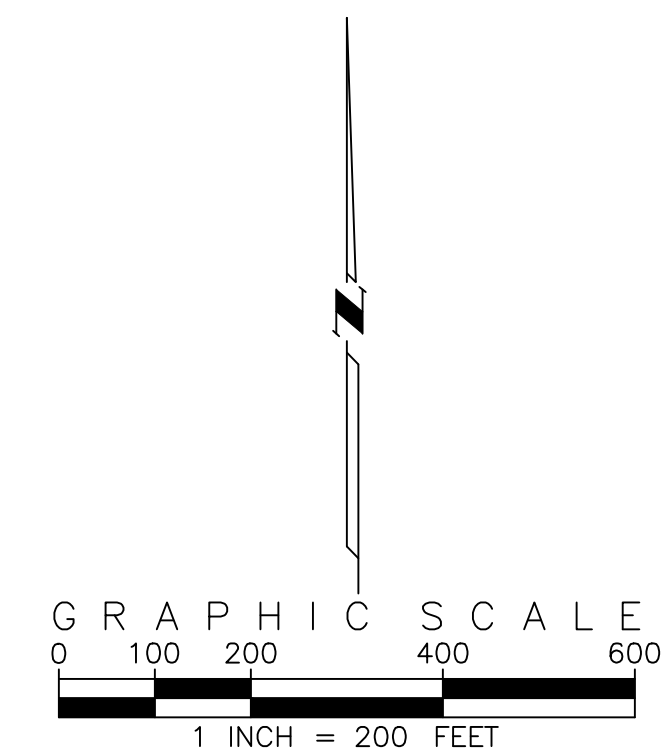
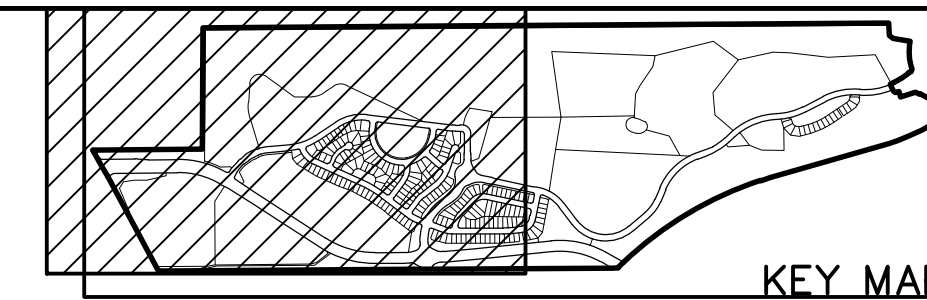
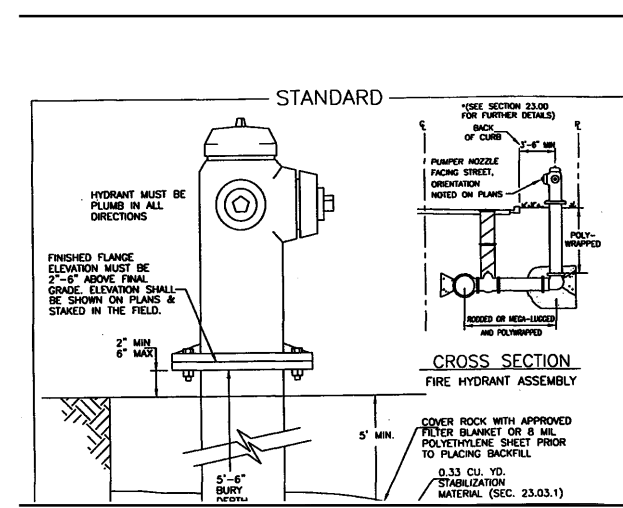


KINGS POINT CONTEXTUAL SITE PLAN NO. 1
CONTEXTUAL SITE PLAN WITH WAIVER
 A PART OF SECTIONS 33 AND 34, TOWNSHIP 5 SOUTH, RANGE 66 WEST OF THE 6TH P.M.
 CITY OF AURORA, COUNTY OF ARAPAHOE, STATE OF COLORADO



SEE SHEET 2

LEGEND	
SYMBOL	DESCRIPTION
	EXISTING SANITARY SEWER MANHOLE & MAIN
	PROPOSED SANITARY SEWER MANHOLE & MAIN
	EXISTING WATER MAIN, FIRE HYDRANT, & VALVE
	PROPOSED WATER MAIN
	WATER PRESSURE ZONE BOUNDARY (EXISTING GROUND ELEVATION)



FIRE HYDRANT PLACEMENT DETAIL

10" SEWER MAIN TO BE EXTENDED BY KINGS POINT SOUTH DEVELOPMENT

12" WATER MAIN TO BE EXTENDED BY KINGS POINT SOUTH DEVELOPMENT

NO CONNECTION BETWEEN EAST AURORA PARKWAY WATERLINE AND SOUTH KINGS POINT WAY WATERLINE



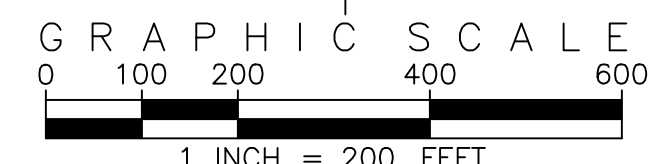
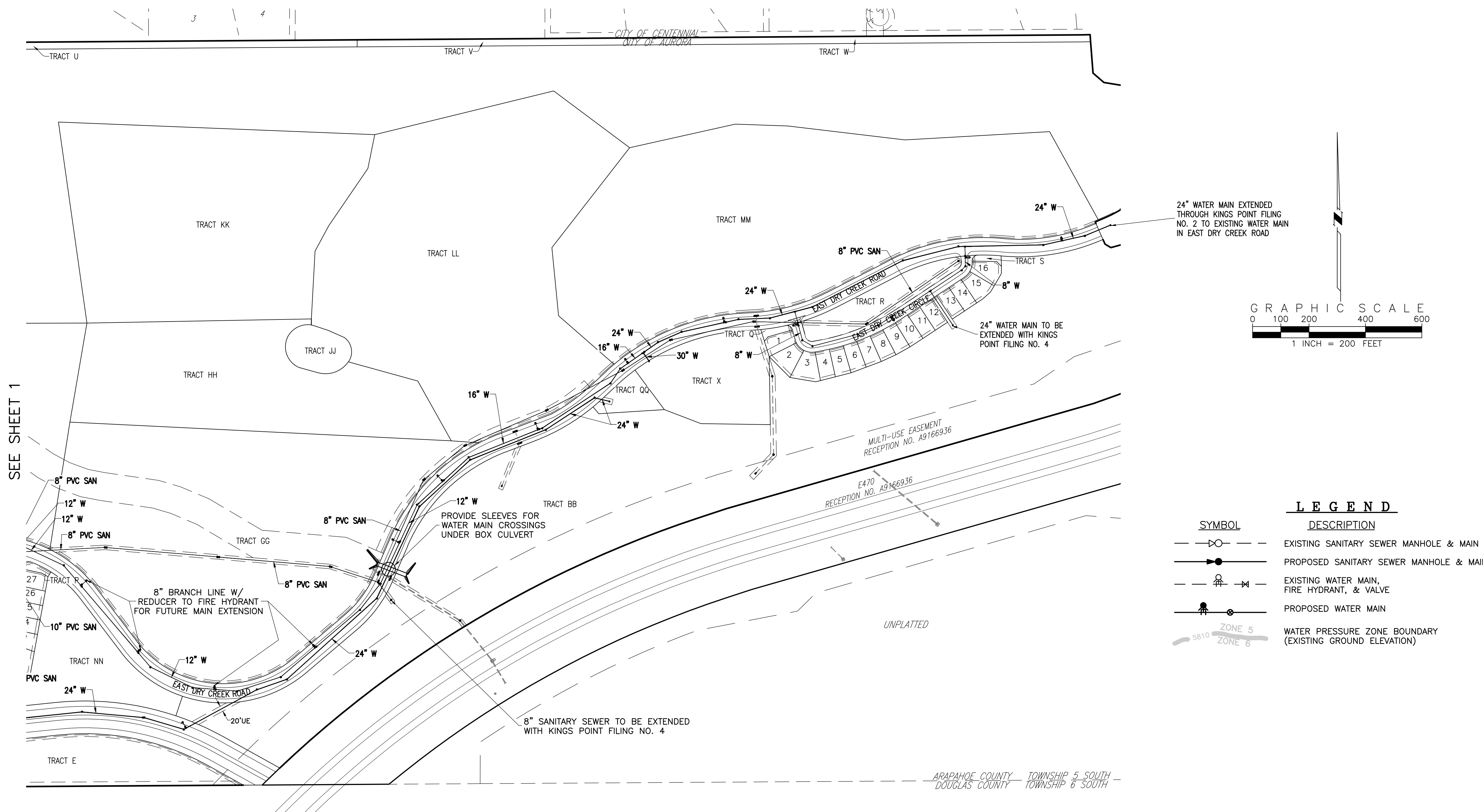
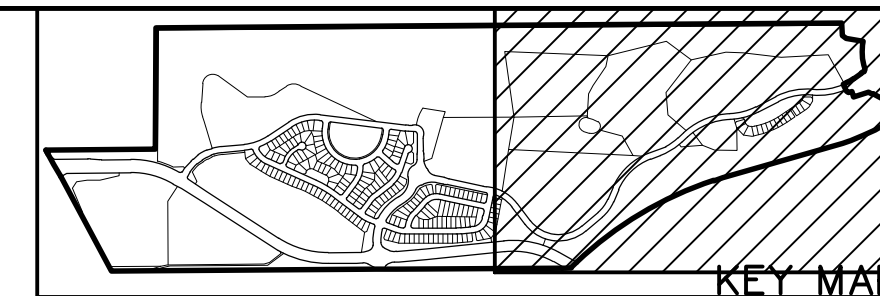
EMK CONSULTANTS, INC.
 ENGINEERING SURVEYING
 LAND DEVELOPMENT
 SERVICES AND SOLUTIONS
 7006 SOUTH ALTON WAY, BLDG. F
 CENTENNIAL, COLORADO 80112-2019
 (303)694-1520 www.EMKC.com

DEVELOPER
 KINGSPPOINT LLC
 c/o CASTLE ROCK DEVELOPMENT COMPANY
 3033 E FIRST AVENUE, SUITE 410
 DENVER, COLORADO 80206
 PHONE: (303) 394-5525
 CONTACT: BRUCE STOKES

PRELIMINARY SANITARY SEWER
 AND WATERMAIN PLAN—WEST
 KINGS POINT FILING NO. 1
 CONTEXTUAL SITE PLAN
 PREPARED: 09.09.16
 REVISED:

01/12/2016 10:08 AM Kings Point 2016 CSP Main Utility CSP PREP UTILITY 2016.dwg WEST 02/20/16 11:05:56 AM adam.11

KINGS POINT CONTEXTUAL SITE PLAN NO. 1
CONTEXTUAL SITE PLAN WITH WAIVER
 A PART OF SECTIONS 33 AND 34, TOWNSHIP 5 SOUTH, RANGE 66 WEST OF THE 6TH P.M.
 CITY OF AURORA, COUNTY OF ARAPAHOE, STATE OF COLORADO

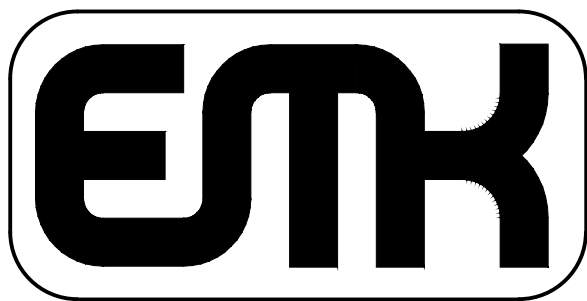


LEGEND	
SYMBOL	DESCRIPTION
	EXISTING SANITARY SEWER MANHOLE & MAIN
	PROPOSED SANITARY SEWER MANHOLE & MAIN
	EXISTING WATER MAIN, FIRE HYDRANT, & VALVE
	PROPOSED WATER MAIN
	WATER PRESSURE ZONE BOUNDARY (EXISTING GROUND ELEVATION)

SEE SHEET 1

TRACT E

ARAPAHOE COUNTY TOWNSHIP 5 SOUTH
 DOUGLAS COUNTY TOWNSHIP 6 SOUTH



EMK CONSULTANTS, INC.
 ENGINEERING SURVEYING
 LAND DEVELOPMENT
 SERVICES AND SOLUTIONS
 7006 SOUTH ALTON WAY, BLDG. F
 CENTENNIAL, COLORADO 80112-2019
 (303)694-1520 www.EMKC.com

DEVELOPER
 KINGSPPOINT LLC
 c/o CASTLE ROCK DEVELOPMENT COMPANY
 3033 E FIRST AVENUE, SUITE 410
 DENVER, COLORADO 80206
 PHONE: (303) 394-5525
 CONTACT: BRUCE STOKES

PRELIMINARY SANITARY SEWER
 AND WATERMAIN PLAN—EAST
 KINGS POINT FILING NO. 1
 CONTEXTUAL SITE PLAN
 PREPARED: 09.09.16
 REVISED:

G:\12187-20 Kings Point\2016\CSP\Main\Utility\CSP PRE UTILITY 2016.dwg EACT. 09/20/16 11:05:21 AM Sheet 11

EMK Job No. 12187.17